

# KENWOOD

## **Document Copyrights**

Copyright 2006 by Kenwood Corporation. All rights reserved.

No part of this manual may be reproduced, translated, distributed, or transmitted in any form or by any means, electronic, mechanical, photocopying, recording, or otherwise, for any purpose without the prior written permission of Kenwood.

## **Disclaimer**

While every precaution has been taken in the preparation of this manual, Kenwood assumes no responsibility for errors or omissions. Neither is any liability assumed for damages resulting from the use of the information contained herein. Kenwood reserves the right to make changes to any products herein at any time for improvement purposes.

**External View****Charging**

The charging time for each pack is shown in the table.

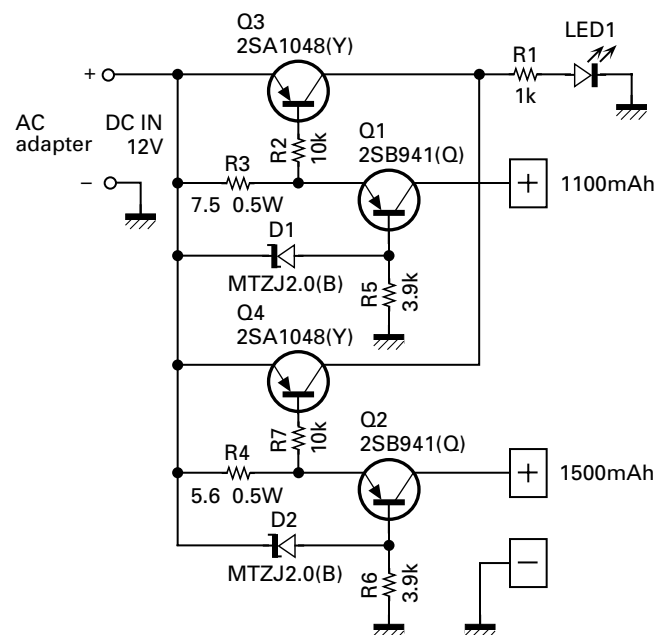
Battery Pack	Voltage (Volts)	Battery Capacity (mAh)	Charging Time (hours)
KNB-16A	7.2	1100	Approx. 8
KNB-17A	7.2	1500	Approx. 8

**Specifications**

Line voltage : 120V AC (K)  
230V AC (M)  
230V AC (T)

Dimensions (Body only) : 2-11/64 in (55 mm) H x 4-1/8 in (105 mm) W x 5-5/16 in (135 mm) D

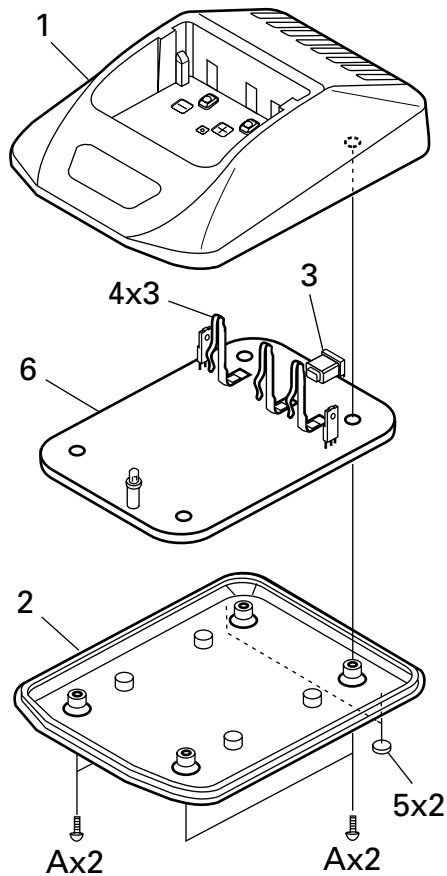
Weight : Approx. 140g / 4.9 oz

**Circuit Diagram**

# KSC-19

## EXPLODED VIEW / PARTS LIST

### Exploded View



### Parts List

\* : New Parts

△ : Safety critical components

Ref. No.	New parts	Part No.	Description	Destination
1		A02-2084-08	Case (Upper)	
2		A02-1967-08	Case (Lower)	
3		E03-0186-08	DC jack	
4		E23-1057-08	Relay terminal	
5		G13-1547-08	Cushion	
A		N80-2612-45	Pan head taptite screw	
6		W02-1929-08	Electric circuit module	
△ -		W08-0479-05	AC adapter (120V)	K
△ -		W08-0573-05	AC adapter (120V)	K
△ -		W08-0558-15	AC adapter (230V)	M
△ -		W08-0574-05	AC adapter (230V)	M
△ -		W08-0576-05	AC adapter (230V)	T
△ -		W08-0513-05	AC adapter (230V)	T
-		W08-0542-05	Charger	

## KENWOOD CORPORATION

14-6, Dogenzaka 1-chome, Shibuya-ku, Tokyo 150-8501, Japan

### KENWOOD SERVICE CORPORATION

P.O. BOX 22745, 2201 East Dominguez Street, Long Beach, CA 90801-5745, U.S.A.

### KENWOOD ELECTRONICS CANADA INC.

6070 Kestrel Road, Mississauga, Ontario, Canada L5T 1S8

### KENWOOD ELECTRONICS DEUTSCHLAND GMBH

Rembrücker Str. 15, 63150 Heusenstamm, Germany

### KENWOOD ELECTRONICS BELGIUM N.V.

Mechelsesteenweg 418 B-1930 Zaventem, Belgium

### KENWOOD ELECTRONICS FRANCE S.A.

13, Boulevard Ney, 75018 Paris, France

### KENWOOD ELECTRONICS U.K. LIMITED

KENWOOD House, Dwight Road, Watford, Herts., WD1 8EB United Kingdom

### KENWOOD ELECTRONICS EUROPE B.V.

Amsterdamsseweg 37, 1422 AC Uithoorn, The Netherlands

### KENWOOD ELECTRONICS ITALIA S.p.A.

Via G. Sirtori, 7/9 20129 Milano, Italy

### KENWOOD IBERICA S.A.

Bolivia, 239-08020 Barcelona, Spain

### KENWOOD ELECTRONICS AUSTRALIA PTY. LTD.

(A.C.N. 001 499 074)

16 Giffnock Avenue, North Ryde, N.S.W. 2113 Australia

### KENWOOD ELECTRONICS (HONG KONG) LTD.

Unit 3712-3724, Level 37, Tower one Metroplaza, 223 Hing Fong Road, Kwai Fong, N.T., Hong Kong

### KENWOOD ELECTRONICS TECHNOLOGIES(S) PTE LTD.

Sales Marketing Division

1 Ang Mo Kio Street 63, Singapore 569110